

Test Report

No.: GZ0801015108/CHEM

Date: JAN 29, 2008

Page 1 of 6

EXPRESS HONOR TRADING LTD
ROOM A3, 5/F, MERIT INDUSTRIAL CENTRE, BLOCK A, 94 TOKWAWAN ROAD, KOWLOON, HONGKONG

The following sample(s) was/were submitted and identified on behalf of the applicant as EG0023, ET0011,
NON-PHTHALATE PVC COMPOUND

SGS Ref No. : GZ10813989EC
Sample Receiving Date : JAN 24, 2008
Testing Period : JAN 24, 2008 TO JAN 29, 2008

Test Requested : A: In accordance with the RoHS Directive 2002/95/EC, and its amendment directives.

B: To determine Polynuclear Aromatic Hydrocarbons (PAHs).

C: Determination of Phthalate in the submitted sample.

D: As specified by client, to test soluble Lead, soluble Antimony, soluble Arsenic,
Soluble Barium, soluble Cadmium, soluble Chromium, soluble Mercury,
soluble Selenium content in the submitted sample.

Test Method : A: With reference to IEC 62321/2nd CDV (111/95/CDV)
Procedures for the Determination of Levels of Regulated Substances in Electrotechnical Products

- (1) Determination of Cadmium by ICP-OES.
- (2) Determination of Lead by ICP-OES.
- (3) Determination of Mercury by ICP-OES.
- (4) Determination of Hexavalent Chromium by Colorimetric Method.
- (5) Determination of PBBs and PBDEs by GC-MS.

B: With reference to EPA Method 8270D. Analysis was performed by GC-MS.

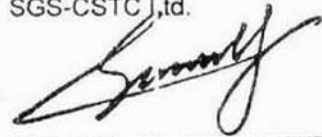
C: With reference to ASTM Method Designation D3421-75. Analysis was performed by
Gas Chromatography / Mass Spectrometry.

D: With reference to EN71 part 3 : 1994 (including amendment A1:2000/ AC:2002).
Analysis was performed by Atomic Absorption Spectrometer & Inductively Coupled
Plasma Atomic Emission Spectrometer (ICP-OES).

Test Results : Please refer to next page.

Conclusion : A: Based on the performed tests on submitted sample(s), the results **comply with** the RoHS
Directive 2002/95/EC and its subsequent amendments.

Signed for and on behalf of
SGS-CSTC Ltd.



Huang Fang, Sunny
Sr. Engineer

This document is issued by the Company under its General Conditions of Service printed overleaf or available on request and accessible at http://www.sgs.com/terms_and_conditions.htm. Attention is drawn to the limitation of liability, indemnification and jurisdiction issues defined therein. Any holder of this document is advised that information contained hereon reflects the Company's findings at the time of its intervention only and within the limits of Client's instructions, if any. The Company's sole responsibility is to its Client and this document does not constitute an offer of insurance or any other financial product. No liability shall be accepted by the Company for any loss or damage, including consequential loss or damage, arising from the use of this document or the appearance of this document is unlawful and offenders may be prosecuted to the fullest extent of the law. Unless otherwise stated, the results shown in this test report refer only to the sample(s) tested and such sample(s) are retained for 30 days only. This document cannot be reproduced except in full, without prior approval of the Company.



Test results by chemical method:

A: (Unit: mg/kg)

Test Item(s):	Method (refer to)	No. 1	MDL	RoHS Limit
Cadmium (Cd)	(1)	N.D.	2	100
Lead (Pb)	(2)	N.D.	2	1000
Mercury (Hg)	(3)	N.D.	2	1000
Hexavalent Chromium (CrVI) by alkaline extraction	(4)	N.D.	2	1000
Sum of PBBs		N.D.	-	1000
Monobromobiphenyl		N.D.	5	
Dibromobiphenyl		N.D.	5	
Tribromobiphenyl		N.D.	5	
Tetrabromobiphenyl		N.D.	5	
Pentabromobiphenyl		N.D.	5	
Hexabromobiphenyl		N.D.	5	
Heptabromobiphenyl		N.D.	5	
Octabromobiphenyl		N.D.	5	
Nonabromobiphenyl		N.D.	5	
Decabromobiphenyl		N.D.	5	
Sum of PBDEs (Mono to Nona)(Note 4)	(5)	N.D.	-	1000
Monobromodiphenyl ether		N.D.	5	
Dibromodiphenyl ether		N.D.	5	
Tribromodiphenyl ether		N.D.	5	
Tetrabromodiphenyl ether		N.D.	5	
Pentabromodiphenyl ether		N.D.	5	
Hexabromodiphenyl ether		N.D.	5	
Heptabromodiphenyl ether		N.D.	5	
Octabromodiphenyl ether		N.D.	5	
Nonabromodiphenyl ether		N.D.	5	
Decabromodiphenyl ether		N.D.	5	
Sum of PBDEs (Mono to Deca)		N.D.	-	-

- Note:
1. mg/kg = ppm
 2. N.D. = Not Detected (< MDL)
 3. MDL = Method Detection Limit
 4. Sum of Mono to NonaBDE & according to 2005/717/EC DecaBDE is exempt.
 5. "-" = Not regulated

This document is issued by the Company under its General Conditions of Service printed overleaf or available on request and accessible at http://www.sgs.com/terms_and_conditions.htm. Attention is drawn to the limitation of liability, indemnification and jurisdiction issues defined therein. Any holder of this document is advised that information contained hereon reflects the Company's findings at the time of its intervention only and within the limits of Client's instructions, if any. The Company's sole responsibility is to its Client and this document does not constitute a transaction from exercising all their rights and obligations under the transaction documents. Any unauthorized alteration, forgery or falsification of the content or appearance of this document is unlawful and offenders may be prosecuted to the fullest extent of the law. Unless otherwise stated, the results shown in this test report refer only to the sample(s) tested and such sample(s) are retained for 30 days only. This document cannot be reproduced except in full, without prior approval of the Company.



B: (Unit: mg/kg)

Compounds	CAS Number	No.1	Detection Limit
Naphthalene (NAP)	91-20-3	N.D.	0.1
Acenaphthylene (ANY)	208-96-8	N.D.	0.1
Acenaphthene (ANA)	83-32-9	N.D.	0.1
Fluorene (FLU)	86-73-7	N.D.	0.1
Phenanthrene (PHE)	85-01-8	N.D.	0.1
Anthracene (ANT)	120-12-7	N.D.	0.1
Fluoranthene (FLT)	206-44-0	N.D.	0.1
Pyrene (PYR)	129-00-0	N.D.	0.1
Benz(a)anthracene (BaA)	56-55-3	N.D.	0.1
Chrysene (CHR)	218-01-9	N.D.	0.1
Benzo(b)fluoranthene (BbF)	205-99-2	N.D.	0.1
Benzo(k)fluoranthene (BkF)	207-08-9	N.D.	0.1
Benzo(a)pyrene (BaP)	50-32-8	N.D.	0.1
Indeno(1,2,3-cd)pyrene (IPY)	193-39-5	N.D.	0.1
Dibenz(a,h)anthracene (DBA)	53-70-3	N.D.	0.1
Benzo(g,h,i)perylene (BPE)	191-24-2	N.D.	0.1
2-Methylnaphthalene (2-MNP)*	91-57-6	N.D.	0.1
1-Methylnaphthalene (1-MNP)*	90-12-0	N.D.	0.1
Total of above PAHs		N.D.	

Note : - N D. = Not Detected (< DL)
 - mg/kg = ppm
 - * These PAHs are not added up

This document is issued by the Company under its General Conditions of Service printed overleaf or available on request and accessible at http://www.sgs.com/terms_and_conditions. Attention is drawn to the limitation of liability, indemnification and jurisdiction issues defined therein. Any holder of this document is advised that information contained hereon reflects the Company's findings at the time of its intervention only and within the limits of Client's instructions, if any. The Company's sole responsibility is to its Client and this document does not generate parties to a transaction from exercising all their rights and obligations under the transaction documents. Any unauthorized alteration, forgery or falsification in the content or appearance of this document is unlawful and offenders may be prosecuted to the fullest extent of the law. Unless otherwise stated, the results shown in this test report refer only to the sample(s) tested and such sample(s) are retained for 30 days only. This document cannot be reproduced except in full, without prior approval of the Company.





Test Report

No.: GZ0801015108/CHEM

Date: JAN 29, 2008

Page 4 of 6

C:

Phthalate	No.1	MDL
Dimethyl Phthalate (DMP)	N.D.	0.005%
Diethyl Phthalate (DEP)	N.D.	0.005%
Dibutyl Phthalate (DBP)	N.D.	0.003%
Benzylbutyl Phthalate (BBP)	N.D.	0.003%
Di-(2-ethylhexyl) Phthalate (DEHP)	N.D.	0.003%
Diisononyl Phthalate (DINP)	N.D.	0.01%
Di-n-octyl Phthalate (DNOP)	N.D.	0.003%
Diisodecyl Phthalate (DIDP)	N.D.	0.01%
Diisobutyl Phthalate (DIBP)	N.D.	0.005%
Dinonyl Phthalate (DNP)	N.D.	0.005%
Diisooctyl Phthalate (DIOP)	N.D.	0.01%
Dipropyl Phthalate (DPrP)	N.D.	0.005%
Dicyclohexyl Phthalate (DCHP)	N.D.	0.005%
Dipentyl Phthalate (DPP)	N.D.	0.005%
Dibenzyl Phthalate (DBzP)	N.D.	0.005%
Diphenyl Phthalate (DPhP)	N.D.	0.005%

COPY

- Note : 1. mg/kg = ppm; 0.1% = 1000ppm
 2. MDL = Method Detection Limit
 3. N.D. = Not detected (Less than MDL)

This document is issued by the Company under its General Conditions of Service printed overleaf or available on request and accessible at http://www.sgs.com/terms_and_conditions.htm. Attention is drawn to the limitation of liability, indemnification and jurisdiction issues defined therein. Any holder of this document is advised that information contained hereon reflects the Company's findings at the time of its intervention only and within the limits of Client's instructions, if any. The Company's sole responsibility is to its Client and this document does not constitute an offer of insurance or any other financial product. No party to a transaction from exercising all their rights and obligations under the transaction documents. Any unauthorized alteration, forgery or falsification of the content or appearance of this document is unlawful and offenders may be prosecuted to the fullest extent of the law. Unless otherwise stated, the results shown in this test report refer only to the sample(s) tested and such sample(s) are retained for 30 days only. This document cannot be reproduced except in full, without prior approval of the Company.



198 Kezhu Road SCIENTECH Park Guangzhou Economic & Technology Development District Guangzhou China 510663
 中国·广州·经济技术开发区科学城科珠路198号 邮编: 510663

t (86-20) 82155555 f (86-20) 82075125 www.cn.sgs.com
 t (86-20) 82155555 f (86-20) 82075125 e sgs.china@sgs.com

Member of the SGS Group (SGS SA)

D:EN71 Part 3 : 1994 (including amendment A1:2000/ AC:2002) - Migration of Certain Elements

Element	No.1	Limit
Soluble Lead (Pb)	< 5	90 mg/kg
Soluble Antimony (Sb)	< 2	60 mg/kg
Soluble Arsenic (As)	< 2	25 mg/kg
Soluble Barium (Ba)	< 5	1000 mg/kg
Soluble Cadmium (Cd)	< 5	75 mg/kg
Soluble Chromium (Cr)	< 5	60 mg/kg
Soluble Mercury (Hg)	< 2	60 mg/kg
Soluble Selenium (Se)	< 5	500 mg/kg

Note : - < = Less than
 - The unit of results is mg per kg

Test Part Description:
 No.1 White plastic grains

COPY

This document is issued by the Company under its General Conditions of Service printed overleaf or available on request and accessible at http://www.sgs.com/terms_and_conditions. Attention is drawn to the limitation of liability, indemnification and jurisdiction issues defined therein. Any holder of this document is advised that information contained hereon reflects the Company's findings at the time of its intervention only and within the limits of Client's instructions, if any. The Company's sole responsibility is to its Client and this document does not generate parties to a transaction from exercising all their rights and obligations under the transaction documents. Any unauthorized alteration, forgery or falsification of the content or appearance of this document is unlawful and offenders may be prosecuted to the fullest extent of the law. Unless otherwise stated, test results shown in this test report refer only to the sample(s) tested and such sample(s) are retained for 30 days only. This document cannot be reproduced except in full, without prior approval of the Company.





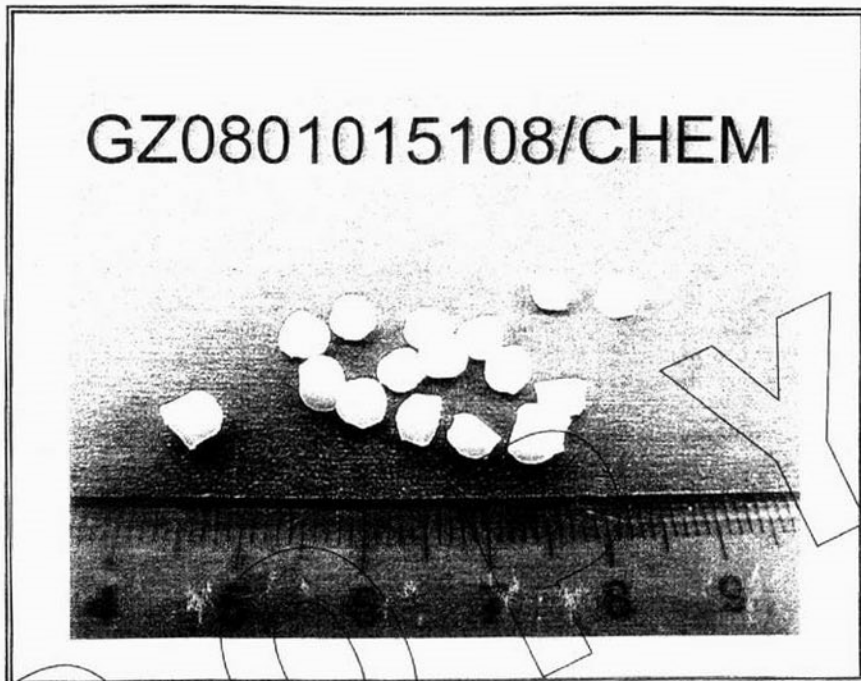
Test Report

No.: GZ0801015108/CHEM

Date: JAN 29, 2008

Page 6 of 6

Sample photo:



SGS authenticate the photo on original report only

*** End of Report ***

This document is issued by the Company under its General Conditions of Service printed overleaf or available on request and accessible at http://www.sgs.com/terms_and_conditions.htm. Attention is drawn to the limitation of liability, indemnification and jurisdiction issues defined therein. Any holder of this document is advised that information contained hereon reflects the Company's findings at the time of its intervention only and within the limits of Client's instructions, if any. The Company's sole responsibility is to its Client and this document does not constitute a contract between the Company and the Client. The Client is advised to consult its legal counsel before entering into any transaction. The Client's signature and stamp on the separate parties to a transaction from exercising all their rights and obligations under the transaction documents. Any unauthorized alteration, forgery or falsification of the content or appearance of this document is unlawful and offenders may be prosecuted to the fullest extent of the law. Unless otherwise stated, the results shown in this test report refer only to the sample(s) tested and such sample(s) are retained for 30 days only. This document cannot be reproduced except in full, without prior approval of the Company.

